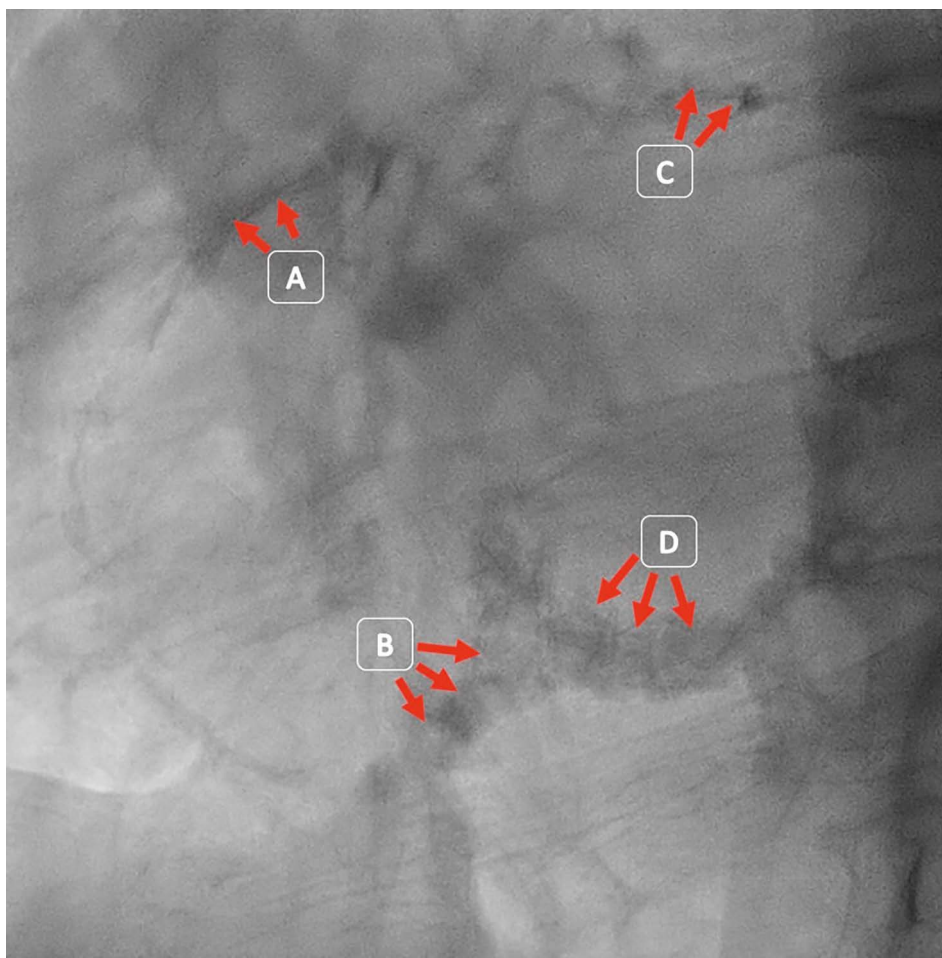


## Calcification with a figure of eight appearance found in routine coronary angiography



Ramanathan Velayutham\*, MD; A. Shaheer Ahmed, MD, DM; Saurav Banerjee, MD

Department of Cardiology, Jawaharlal Institute of Postgraduate Medical Education and Research, Puducherry, India



**Figure 1.** Fluoroscopic LAO view. This figure shows calcium deposits in a figure of eight along the right coronary artery (A), the tricuspid annulus (B), the left circumflex artery (C) and the mitral annulus (D). LAO: left anterior oblique

\*Corresponding author: Department of Cardiology, Jawaharlal Institute of Postgraduate Medical Education and Research, Jipmer Campus Road, Dhanvantari Nagar, Puducherry 605006, India. E-mail: [nadalram@gmail.com](mailto:nadalram@gmail.com)

A 65-year-old female with recent anterior wall myocardial infarction presented with exertional angina. The examination found a pansystolic murmur at apex. Transthoracic echocardiography showed hypokinesia of the anteroseptal region and mitral annular calcification with severe mitral regurgitation.

Coronary angiography showed triple vessel disease. Fluoroscopy in the left anterior oblique (LAO) view demonstrated calcifications with a horizontal figure of eight appearance (**Figure 1**).

This image illustrates the importance of understanding fluoroscopic anatomy. Drawing an oblique line in the middle of the fluoroscopic LAO view helps to differentiate the right- and left-sided cardiac chambers<sup>1</sup>. The lower semicircle of the figure 8 was formed

by annular calcification of the tricuspid valve and mitral valve annulus, while the upper half was completed by calcium along the right coronary artery and left circumflex artery on the right and left sides, respectively. The patient was referred for surgical mitral valve replacement with coronary artery bypass grafting.

### Conflict of interest statement

The authors have no conflicts of interest to declare.

### Reference

1. Thériault-Lauzier P, Andalib A, Martucci G, Mylotte D, Cecere R, Lange R, Tchétché D, Modine T, van Mieghem N, Windecker S, Buihieu J, Piazza N. Fluoroscopic anatomy of left-sided heart structures for transcatheter interventions: insight from multi-slice computed tomography. *JACC Cardiovasc Interv*. 2014;7:947-57.