

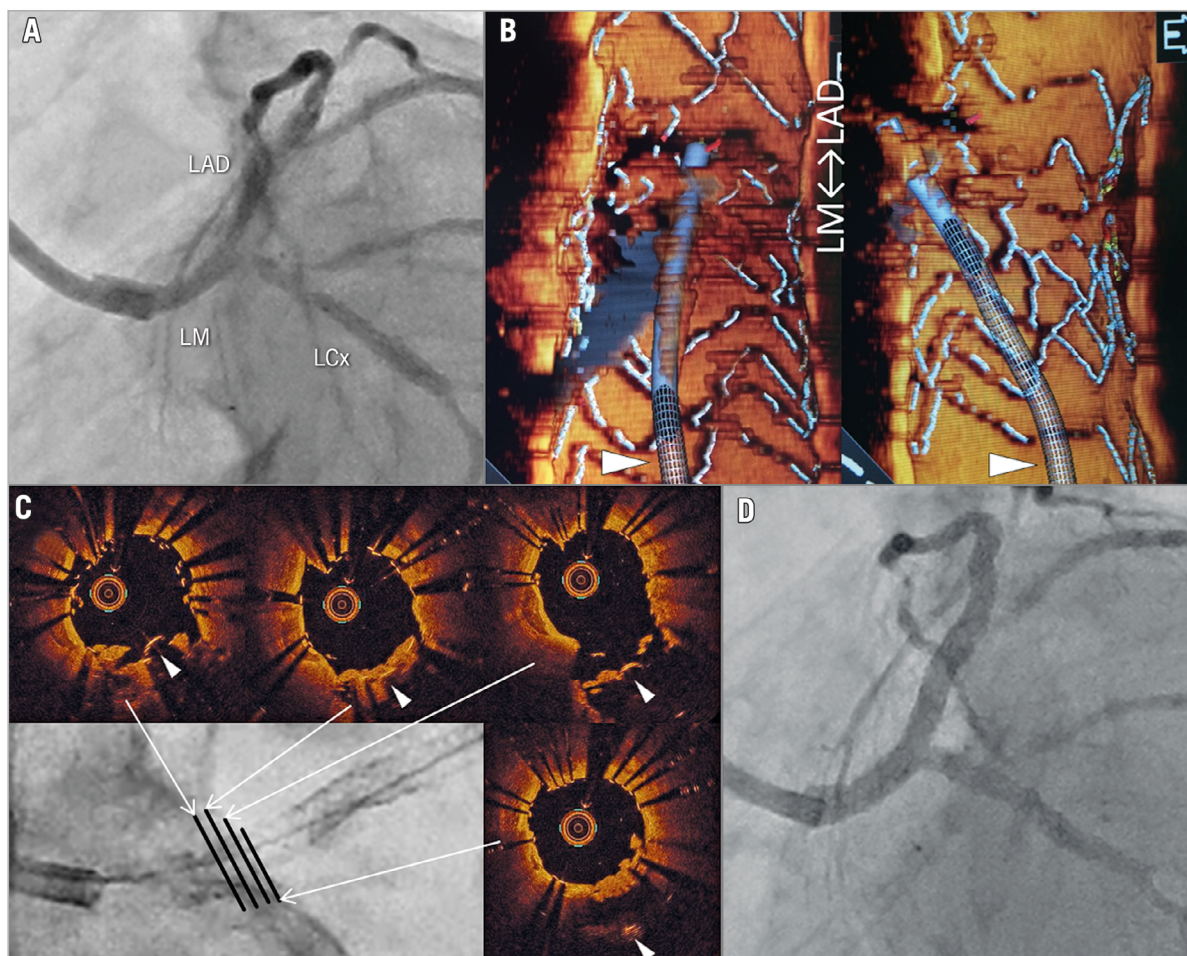
# Unsuccessful confirmation of rewiring position with three-dimensional optical coherence tomography caused by thrombus formation on jailed struts



Fumiaki Nakao\*, MD, PhD

Department of Cardiology, Yamaguchi Grand Medical Center, Hofu, Japan

This paper also includes supplementary data published online at: [www.asiaintervention.org](http://www.asiaintervention.org)



\*Corresponding author: Department of Cardiology, Yamaguchi Grand Medical Center, 77 Ohsaki, Hofu, Yamaguchi 747-8511, Japan. E-mail: [nakao-ymghp@umin.ac.jp](mailto:nakao-ymghp@umin.ac.jp)

An 80-year-old man had culotte stenting performed for a left main (LM) true bifurcation lesion (**Panel A**). He underwent implantation of a first stent on the LM-left circumflex artery (LCx) with an Ultimaster® 2.5×18 mm (Terumo, Tokyo, Japan). After opening the jailed struts, he underwent a second stent implantation on the LM-left anterior descending artery (LAD) with an Ultimaster 3.0×24 mm. After rewiring to the LCx, using three-dimensional optical coherence tomography (3D-OCT) with the OPTIS™ Metallic Stent Optimization Software™ (St. Jude Medical, St. Paul, MN, USA), no links connecting to a carina were confirmed, but the guidewire recrossed to the LCx through some tissue on the LCx ostium, and the distal cell rewiring could not be confirmed (**Panel B**). According to two-dimensional OCT (2D-OCT), the unsuccessful confirmation with 3D-OCT was caused by thrombus formation on the jailed struts, and the guidewire recrossed through the distal cell (**Panel C, Moving image 1**). After final kissing balloon dilation,

coronary angiography (**Panel D**), 2D-OCT (**Moving image 2**), and 3D-OCT (**Supplementary Figure 1**) showed a good result.

3D-OCT is useful for bifurcation PCI, but confirmation by 2D-OCT is also required.

### Conflict of interest statement

The author has no conflicts of interest to declare.

### Supplementary data

**Supplementary Figure 1.** Final 3D-OCT.

**Moving image 1.** 2D-OCT from LAD to LM, after second stent implantation followed by rewiring to LCx.

**Moving image 2.** Final 2D-OCT from LAD to LM.

*The supplementary data are published online at:  
www.asiaintervention.org*



## Supplementary data

**Supplementary Figure 1.** Final 3D-OCT.



LAD: left anterior descending artery; LM: left main coherence tomography